

# PREPARED 006/Escape Foundation/Mara Elephant Project

---

## Milestone E: Technical Report

### Table of Contents

- Milestone E: Technical Report..... 1
- Introduction: ..... 2
- Executive Summary: ..... 2
- Synthesis and analysis of data: ..... 2
- Recommendations for influencing/engaging policy makers ..... 7
- Financial Report:..... 7
- Final Density MAP: ..... 10
- Screenshots: ..... 11
- Activities Report: ..... 14
- Activity Description: Training Report: ..... 14
- Patrols and Security: ..... 15
- Use of WILD:..... 15
- Use of GPS and Map Reading..... 16
- Helicopter SOPs:..... 16
- Medic Training:..... 17
- HWC SOPs ..... 17
- Weapons Training ..... 18
- Recommendations: ..... 19
- Planned activities: ..... 19

## **Introduction:**

MEP and the PREPARED project has been working together in the Maasai Mara to decrease elephant poaching, lower conflict between farmers and elephants, and better understand the rangeland extent of elephants and how that is changing. We not only use the elephant collars as a scientific tool but also a conservation tool to include immobility reporting and Geofence reporting. During this reporting period our major activity has been conduct the asset training for the 21 Pardamat Conservancy and Ol Kinyei Conservancy rangers. The training was conducted from the 23<sup>rd</sup> to the 28<sup>th</sup> of May.

## **Executive Summary:**

This report details all activates completed under the PREPARED 006 grant to ESCAPE Foundation/Mara Elephant Project. The Technical report includes 1) synthesis and analysis of all data and findings for influencing/engaging policy makers; 2) Final density maps in hard and soft copy; 3 Final Financial Report completed in accordance with guidance and templates.

In addition to the final report we also report on the Pardamat Conservancy and Ol Kinyei rangers asset training activity.

## **Synthesis and analysis of data:**

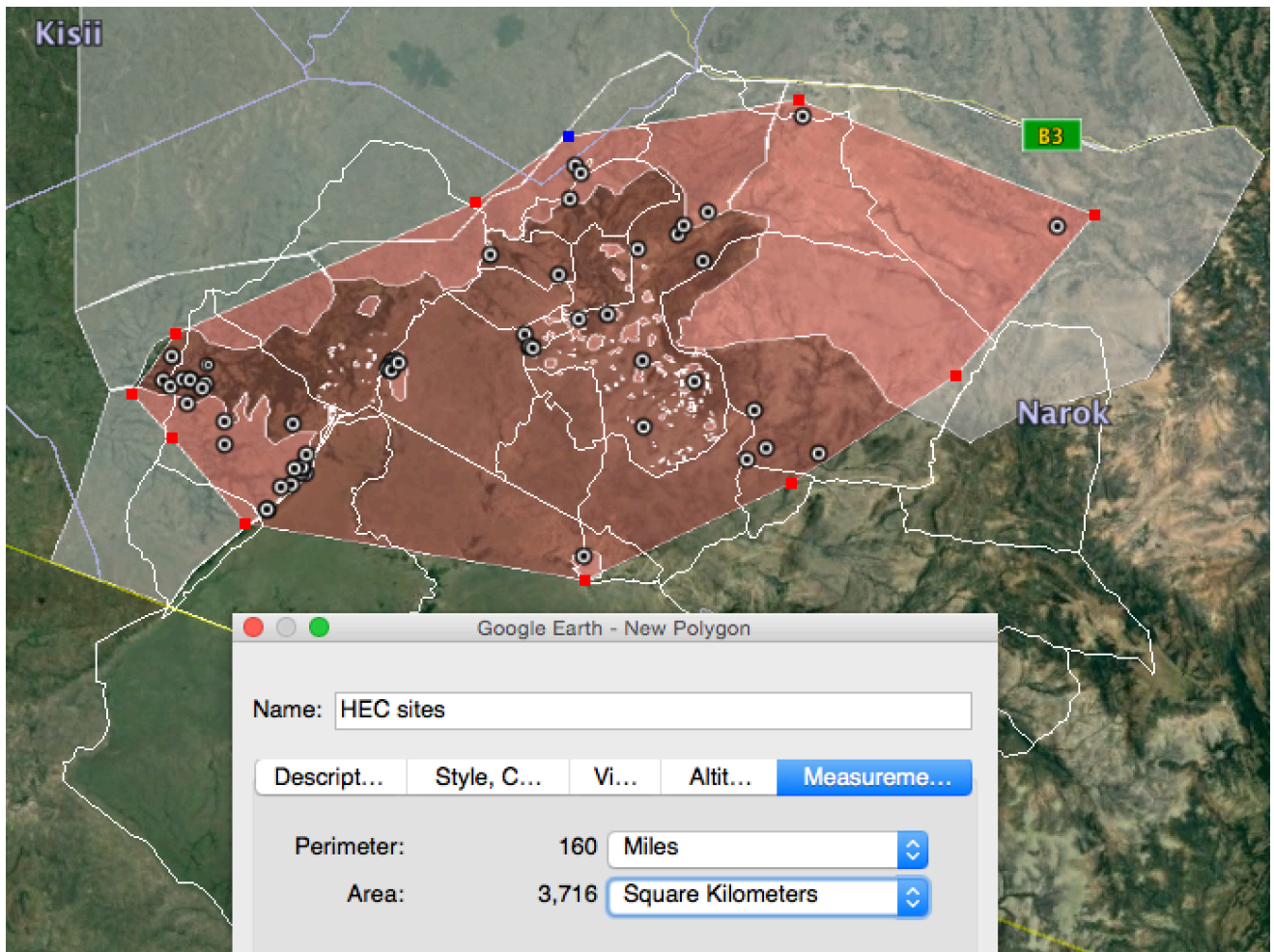
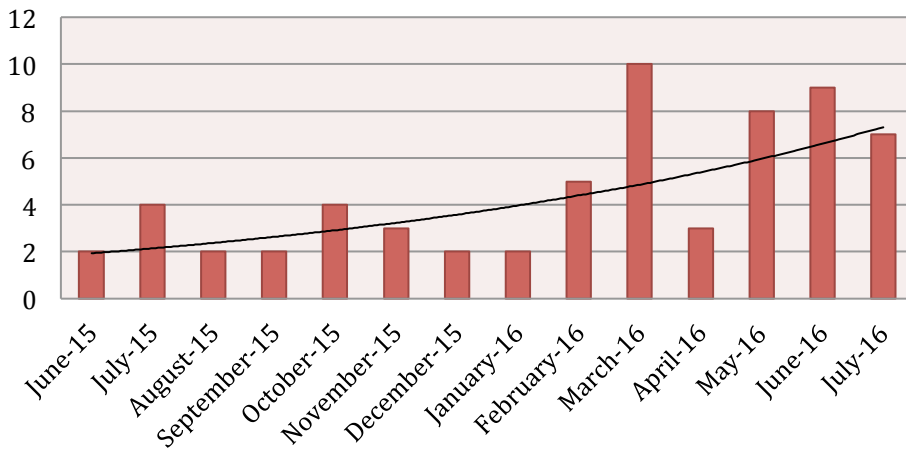
### **Geofences:**

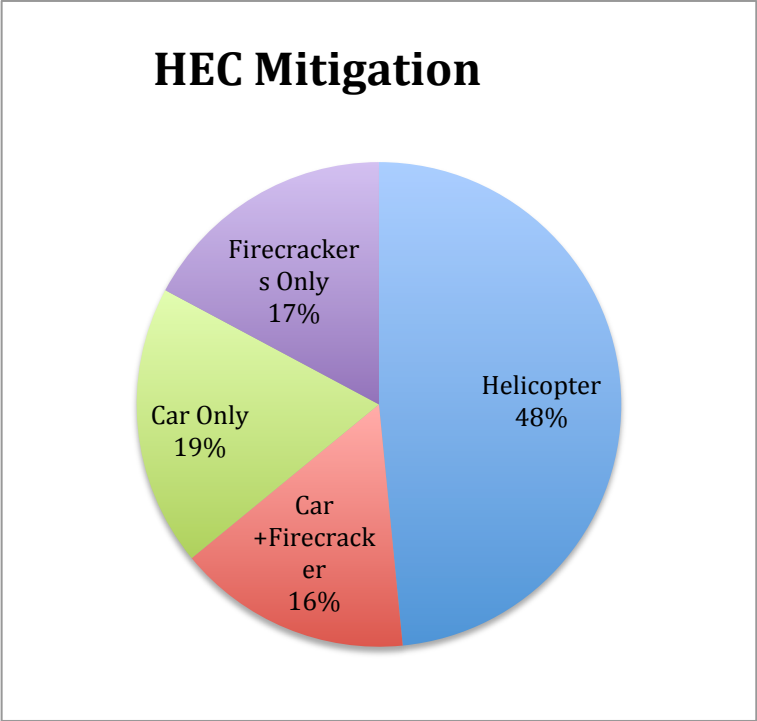
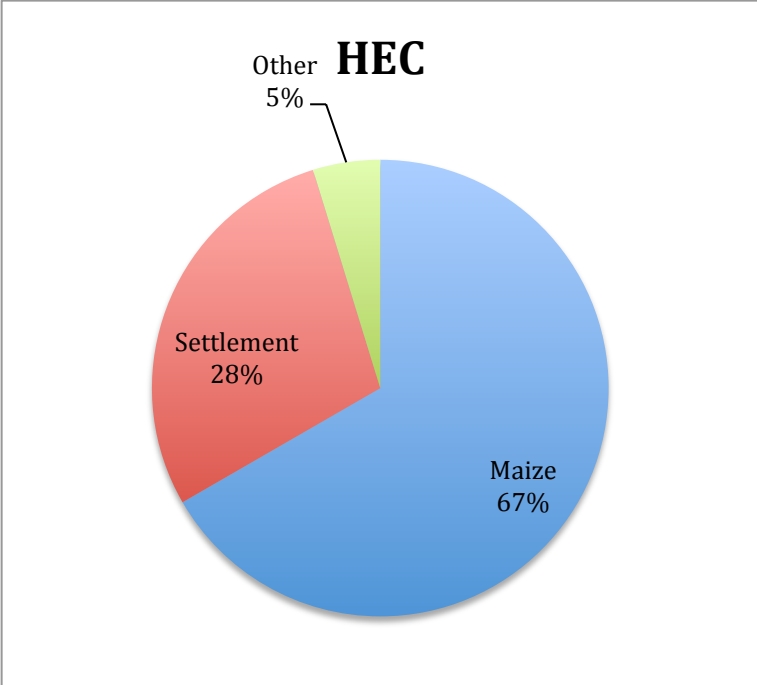
With PREPARED support MEP has mapped geofences defining the western extent of the Mara Ecosystem (see midterm report).

### **HEC sites:**

MEP has responded to 63 HEC incidents from June 2015 to July 2016 in an area covering 3,700Km<sup>2</sup>. We saw the trend increase of conflict sites toward the end of the reporting period. Although conflict has most likely increases year on year but we were also able to respond increased conflict reports when we became fully operational with the helicopter.

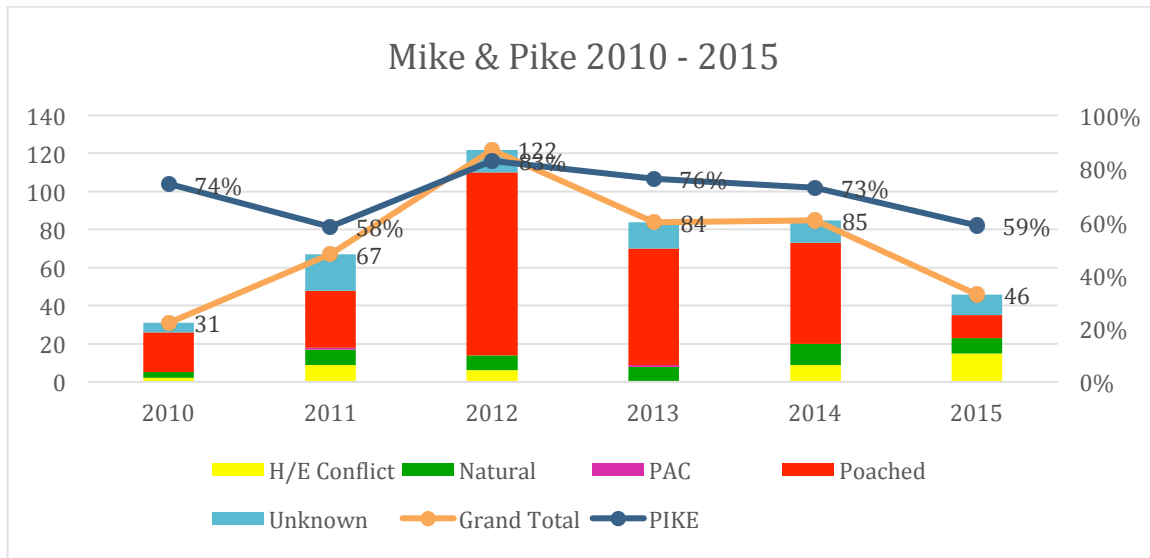
## HEC June 2015 to July 2016





**Monitoring of Illegal Killing of Elephants (MIKE):**

Our data shows that although the total number of elephant carcasses has decreased the proportion of illegal deaths as a result of Human Wildlife Conflict has increased.



#### Ranger data:

During this reporting period we have developed GPS tracking of all ranger patrols movement's in the field. The current process for the tracking includes returning to the HQ each week and downloading the GPS tracks. The attributes collected from the patrols have been inputted manually in the form of a daily planner. MEP has been supported by PREPARED to pilot application WILD to track rangers and add patrol data using a smartphone. We have been populating WILD on a daily basis and we plan to continue to use WILD to collect patrol data.

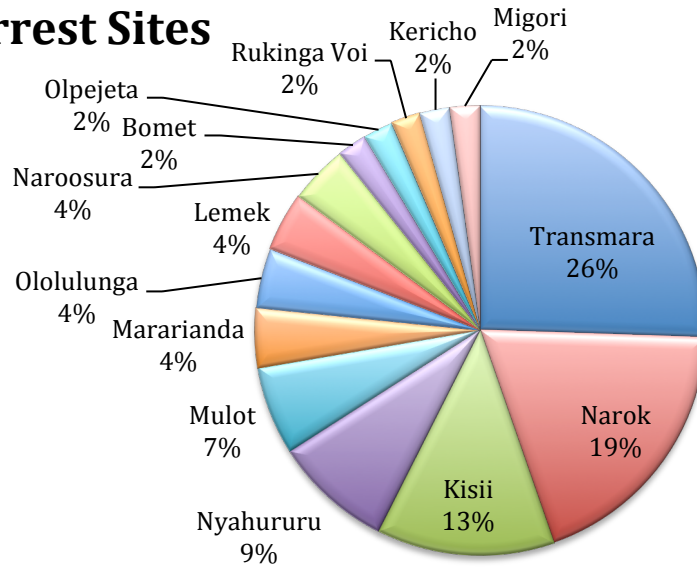
Although we use wild we also have a dedicated GPS device which tracks ranger movements and are then downloaded when they return to base. These developments are enabling MEP to both better monitor the movement of patrols and plan patrols.

#### Arrest data:

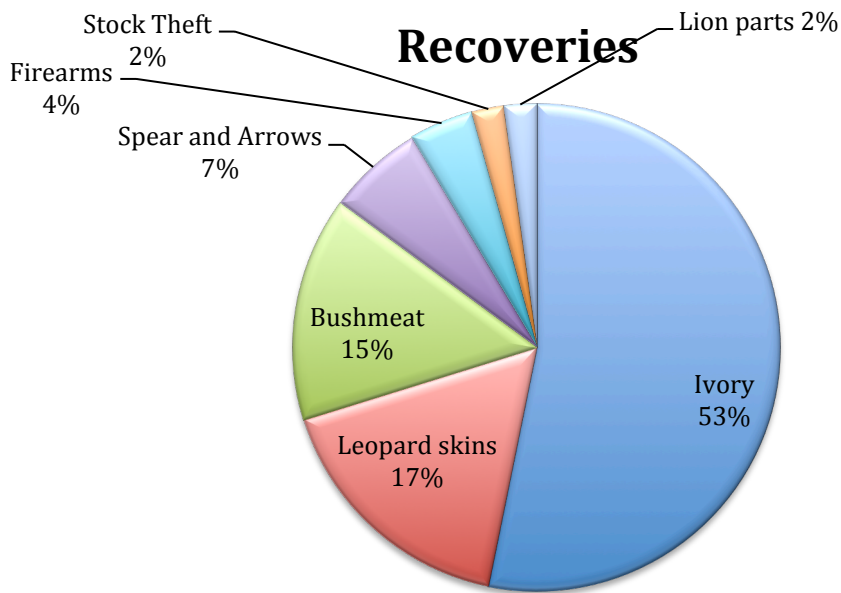
MEP has been collecting and compiling arrest data from all of our arrests. With prepared support of 8 rangers MEP was able to make these arrests. WE are seeing a general decline in arrests as a result of less poachers, dealers and middlemen, operating in Narok county. One interesting observation from the analysis of the arrest data is that second after ivory recoveries were leopard skins.

We believe that poaching in Narok County is on the decline as a result of keen antipoaching work, investigative work and still penalties as a result of judicial change. While MEP does not take full credit for the decline we have been instrumental in catching the majority of ivory poachers and dealers in Narok County.

## Specific Arrest Sites



## Recoveries



## **Recommendations for influencing/engaging policy makers**

Elephant Voices, Save the Elephants and MEP hosted a workshop for Members of the Narok County Assembly at Base Camp Foundation Eagle View on the 6<sup>th</sup> and 7<sup>th</sup> of February to present the Mara Ecosystem Connectivity” report the 3 organizations developed. The report details elephant numbers, corridors, elephant density, poaching hotspots, land use, HEC hotspots and drivers, Proposed priority actions and recommendations. The report was well received (See in Annex 1) and led to further developments with WWF and Narok County Government to hold the first spatial planning meeting on the 27<sup>th</sup> and 28<sup>th</sup> of July 2016. The single most useful tool to define the elephant range was MEP, STE and PREPARED’s elephant collar data.

## **Financial Report:**

Year to date MEP has received 84,788USD from ESCAPE Foundation to the Seiya MEP account in Kenya as we met pre-negotiated milestones. MEP Expects a final amount of 14,963 upon submission of this report.

Budget: MEP has recorded a -1% variance from the original budget. Or in real terms a deficit of 609USD.

Procurement: We were not able to procure night vision goggles in Kenya as they are import restricted.

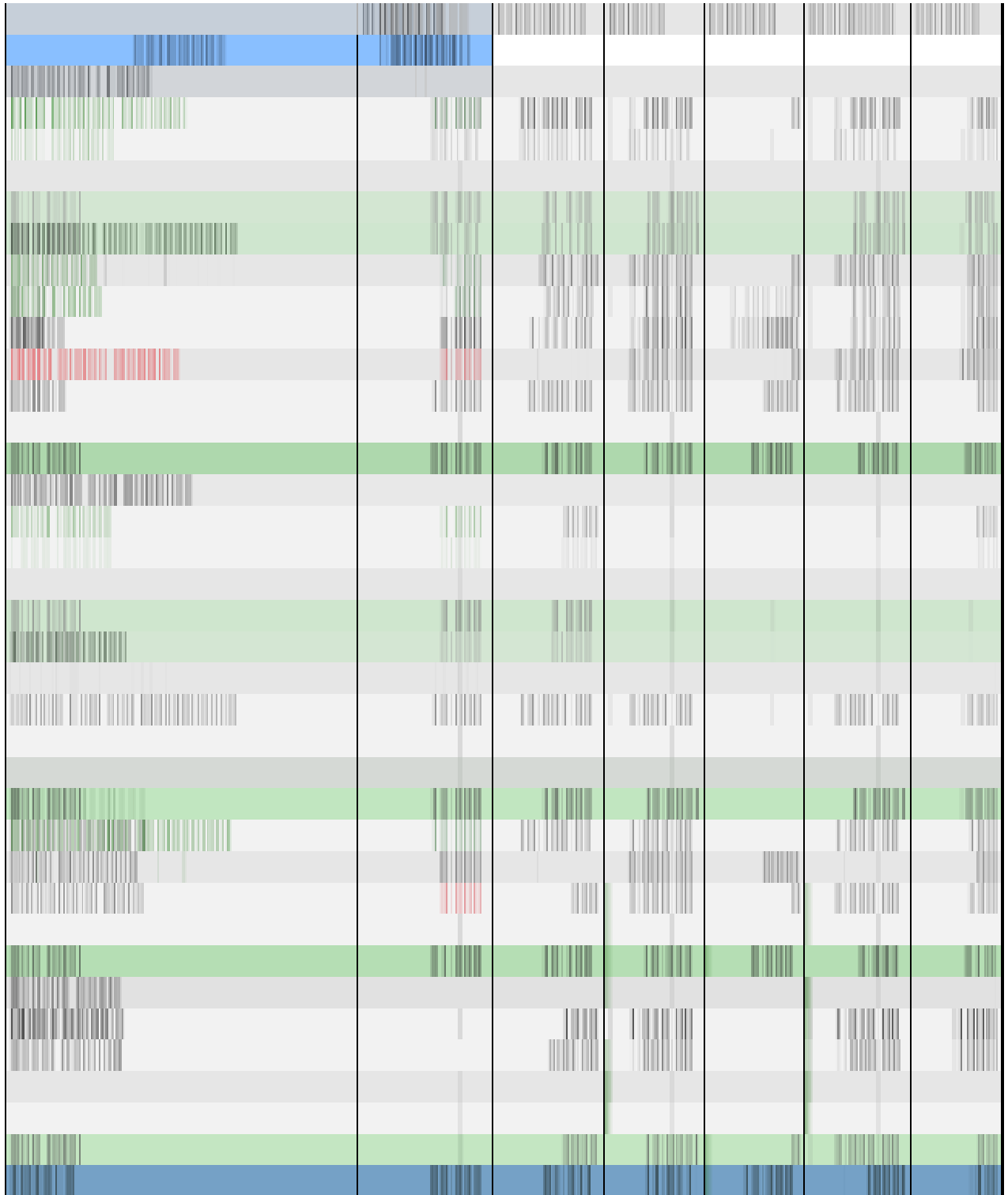
Future Procurement and Expenditure:

We plan to Purchase digital radios for the amount 2,480USD.

We plan to purchase 1 iridium satellite collar with savings from collars purchased.

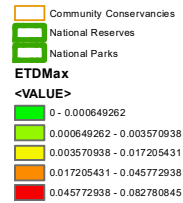
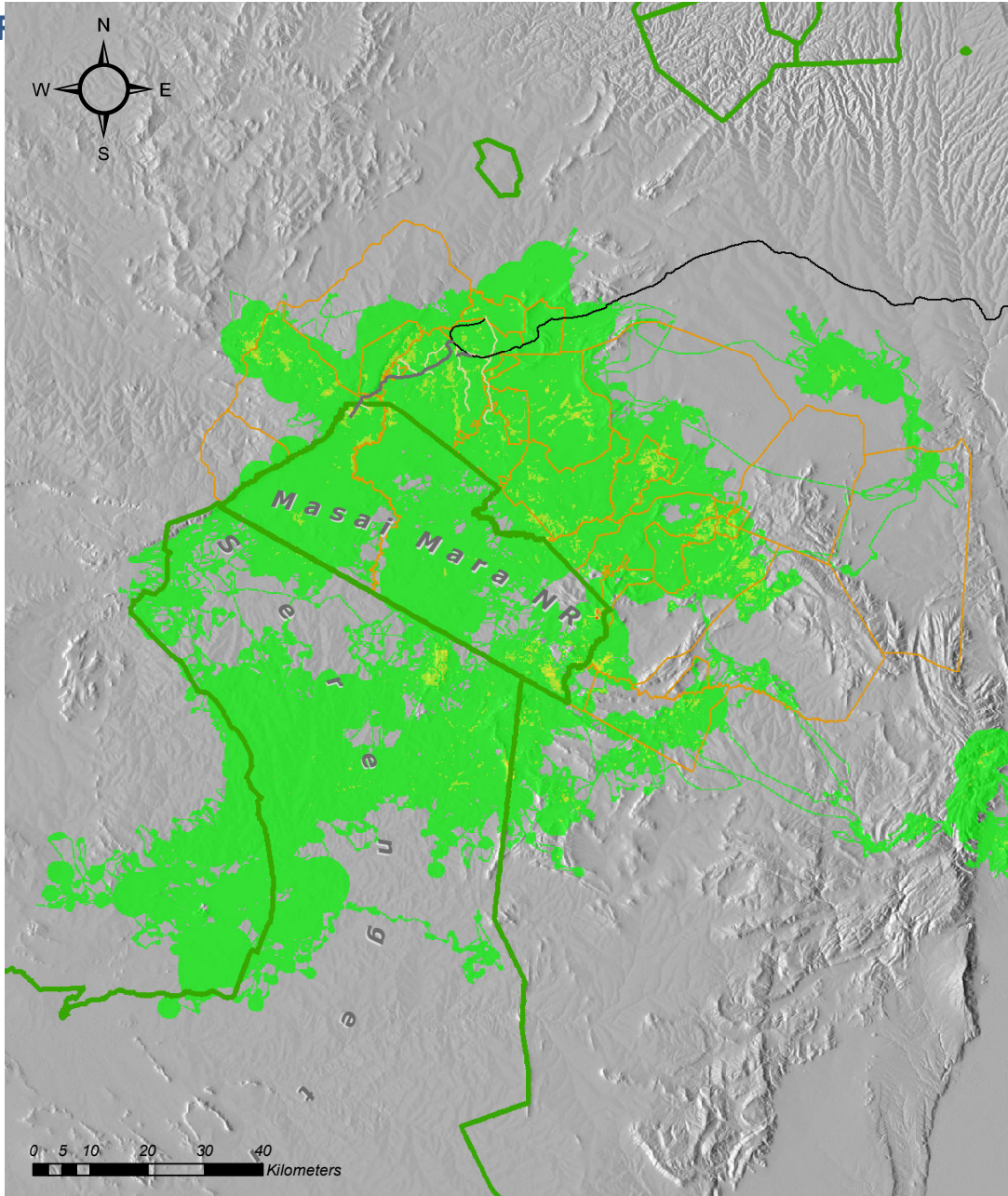
We plan to spend 6,000 USD on monitoring our collared elephants by air and completing the STE aerial monitoring forms.

Interest: MEP has not earned any interest on the funds provided by PREPARED.

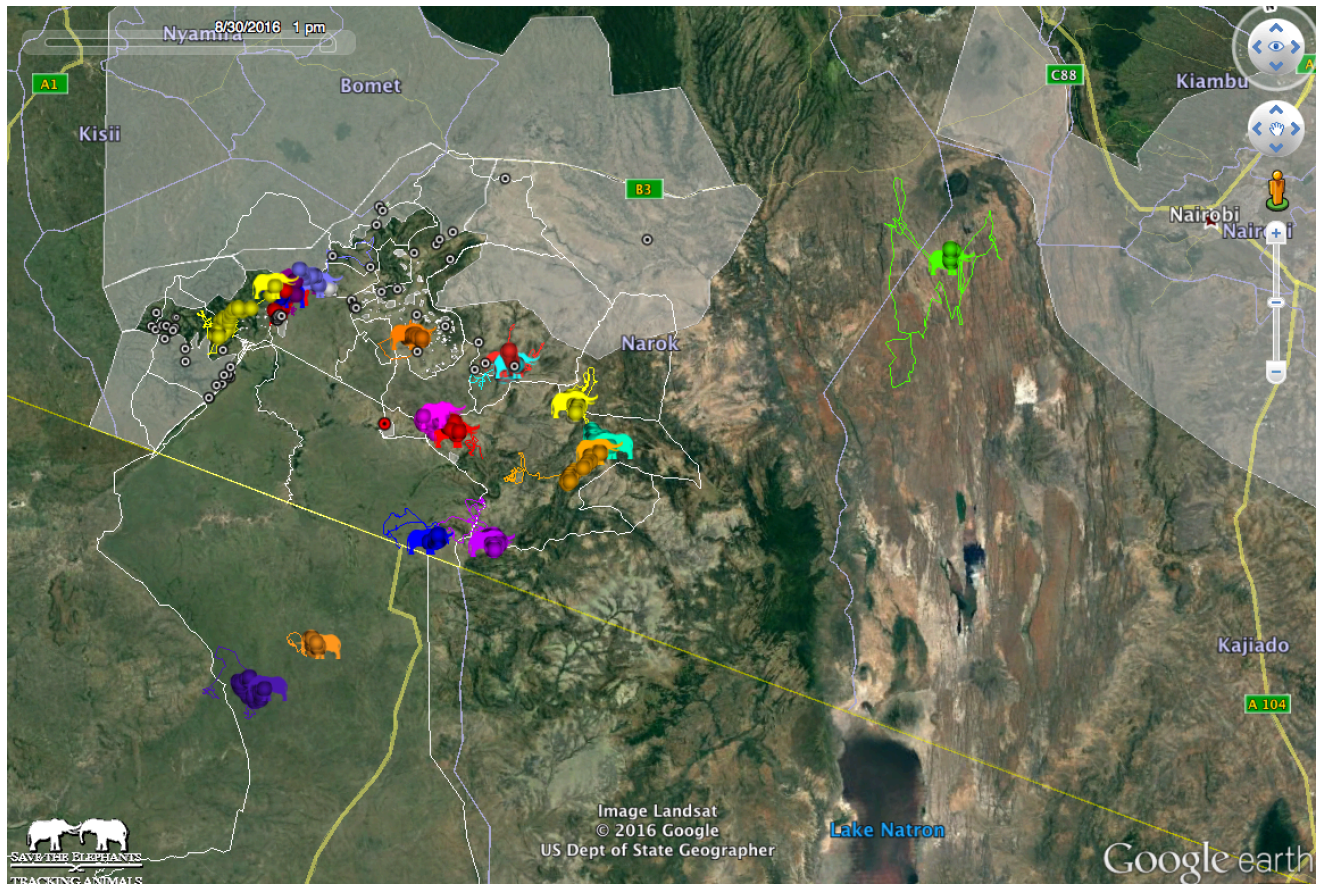




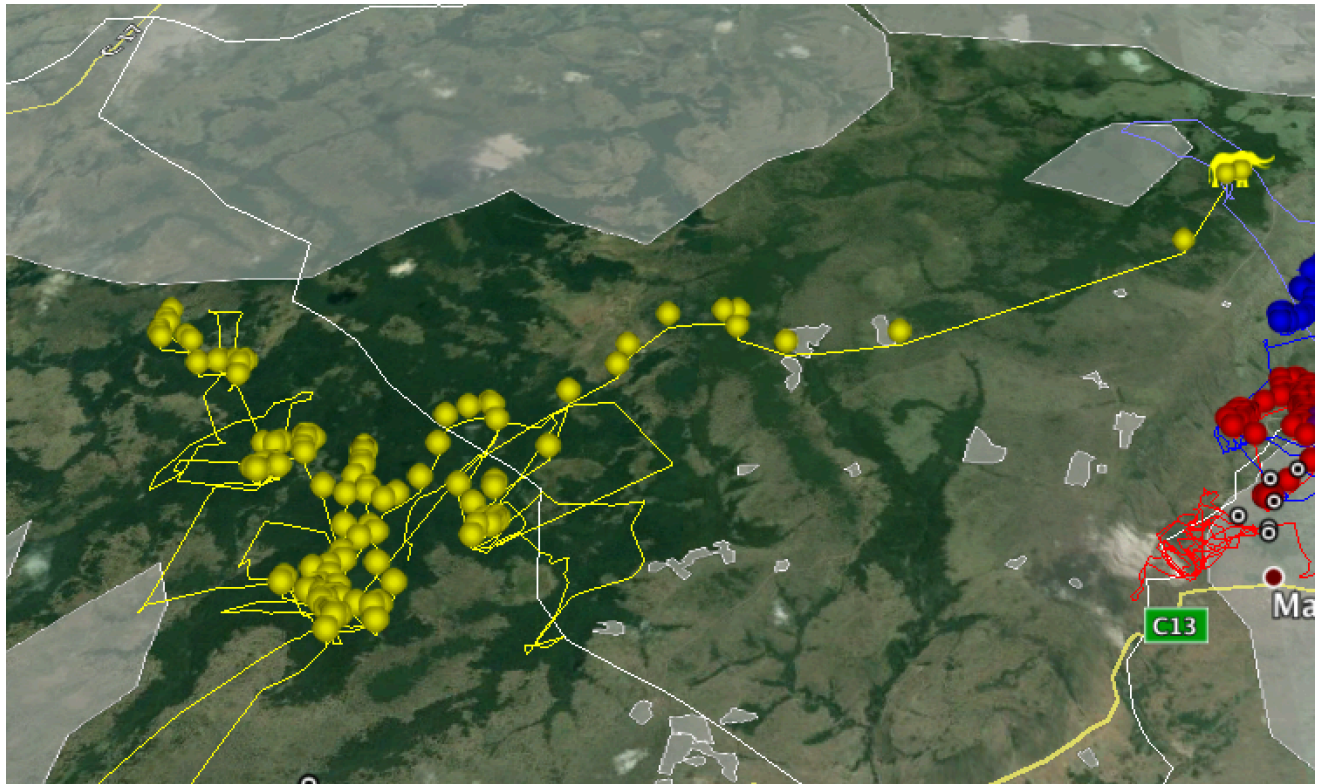




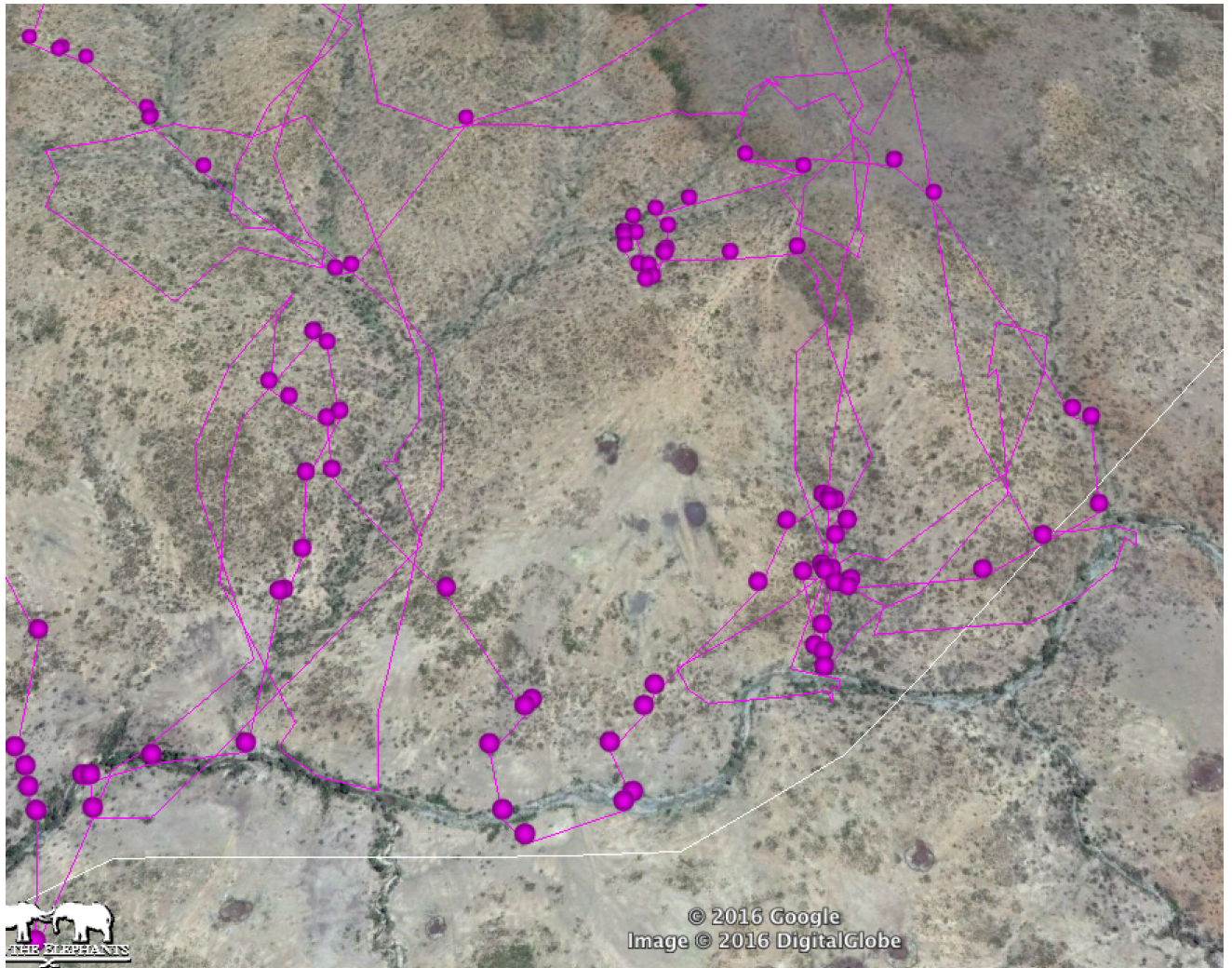
## Screenshots:



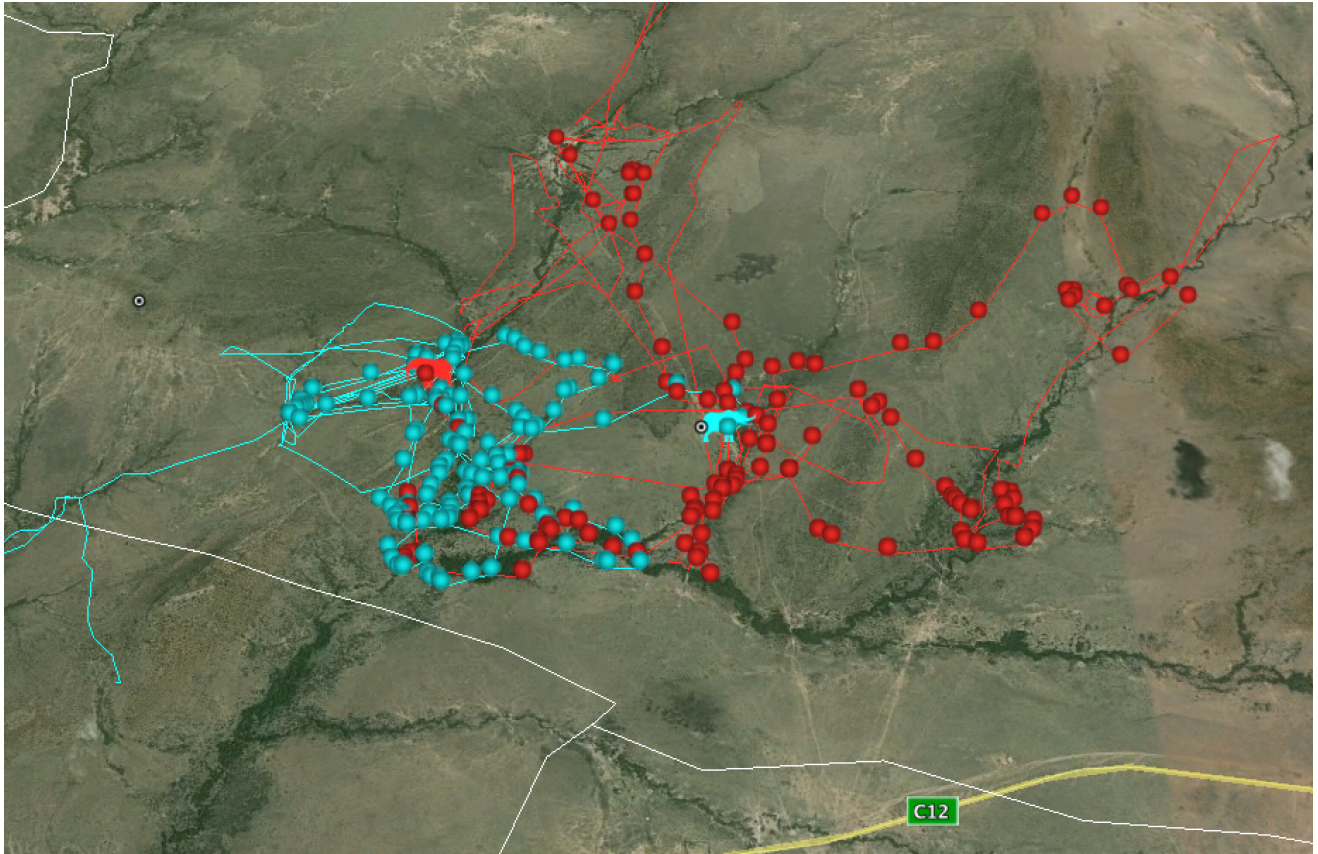
Current Screenshot (30<sup>th</sup> August 2016) of all MEP and WWF collared elephants in the Mara region.



Lucy steaks out of Nyekweri forest to near Kirindon August 2016



Naibosho a manyatta in the Talek area but continues to live close to it. August 2016.



Chelsea and Limo still part of the Mega herd in Olkinyei.

### Activities Report:

MEP has reported on the activities undertaken with support from PREPARED in the midterm report until June 2016 with successes, challenges mitigating strategies and recommendations. MEP has undertaken 1 major additional activity since then: Pardamat Asset Training.

### Activity Description: Training Report:

From the 23<sup>rd</sup> to the 28<sup>th</sup> May 2016 MEP rangers conducted asset training for 21 Pardamat and Olkinyei rangers. They had just finished their 3-month Manyani training with KWS. The training was a success and WWF and MMWCA who have sponsored them can be proud of the group of young men who will protect their conservancies. The communities will also have improved security and medic services. The training focused on using specific assets, which the rangers will be both exposed to when working alongside MEP but also while on regular deployment. The trainers were selected from current MEP staff including: 1 Patrol Medic, the CEO, MEP intel Warden, and MEP Tracking Manager. The training included the below packages:

- a) Patrols & security

- b) Use of GPS and Map Reading
- c) Use of Wild
- d) Helicopter S.O.Ps;
- e) Human Wildlife Conflict SOPs
- f) Patrol Medic Package
- g) Weapons Training
- h) Test: Confirmatory Exercise

### **Patrols and Security:**

Each Patrol under command of a nominated Patrol commander was tested in an Ambush, Patrols were given set areas to recce, return and brief their relevant section to there plan.

Patrol commanders briefings were very good with detailed planning all sketches were accurate to the Ambush areas and orientated

Deployment and conduct of these Ambushes were very good, with good command and control from all the nominated patrol commanders

Scene of crimes training was given post incident, all now understand the importance of evidence gathering, detailed notes taken at the scene with good imagery and gps coordinates for evidence to be given for a report and or to the Police for later prosecution

All teams conducted various Patrols and all understand the rendezvous (RV) procedures for day and night patrols, all understand the security need of daily clearance patrols when deployed in the field with the use of an emergency rendezvous (ERV)

The relevant commanders of all deployments conducted daily Briefs and Debriefs

### **Use of WILD:**

All rangers were training to use the WILD mobile app and were given 4 smart phones by WWF. Rangers were introduced to WILD –wildlife information & landscape data. The first step was to register the new organization from the back –end and the rangers, the training package included:

- 1.How to record a Patrol
- 2.Record incident, poaching, animal mortality, human wildlife conflict, Human activity, community services, HWC advance and Animal treatment.
- 3.Record wildlife
- 4.Informers
- 5.Panic button and register specific people to received panic button alert
- 6.Sync data.
- 7.Log in and Log out of the application.

After training rangers were given time to go to the field and record Data, rangers were presented from the MEP office on how they recorded Data and specifically to correct errors from the groups.



### **Use of GPS and Map Reading**

All Rangers are competent in map reading, orientating them selves on the ground and have the ability to provide distance and direction to other teams and aircraft.

All were trained on the Garmin 401 wrist mounted GPS, all are competent in marking a Waypoint and navigating to a waypoint.

All rangers passed an individual map reading test, all had to Plot 5 locations and identify 5 locations on a map giving distance from Observation posts and plotting a waypoint on a GPS, including the conversion from MGRS/UTM to Lat and Long when dealing with aerial assets

Several members of the team are illiterate and unable to write down the Grid references but all were able to locate these on the map and show the relevant positions by pointing at the area on the map and all are competent with the GPS

### **Helicopter SOPs:**

The team are all competent in the safe handling of the Helicopter, marking a restricted Helicopter Land Site (HLS), understanding the wind and the safe marking / security of the nominated HLS.



All are aware of the safe approach to a helicopter and the emplane/deplane drills when operating with a helicopter. All are aware of walking-on techniques for guiding aircraft to operational sites. Area search tactics were explained for the use of fixed wing aircraft.

All were taken for a demo flight following the above procedures.

### **Medic Training:**

All Rangers were trained in Basic Medical field care. All are competent in the use of a Tourniquet, Blood bandages and Cardiac Pulmonary Resuscitation (CPR). Each Ranger passed an individual test on the above skills

Which included the below

- Correct use of Bandages
- CPR
- Correct use of a Tourniquet
- Moving a casualty
- Recovery position
- Fracture control



### **HWC SOPs**

All teams were introduced to recording HWC incidents with wild and KWS, preserving incident sites, reporting incidents, and community management. Teams were also introduced to mitigating HWC non-lethally using firecrackers, vehicles and drones. Although we were not able to train the rangers to fly drones we introduced them to the concept.

## **Weapons Training**

All Rangers were introduced to the Remington 7mm mag weapon system and all associated safety requirements. The correct handling use of the weapon when deployed on foot, safe carriage when in a vehicle and aerial assets

A live firing practice was undertaken and all rangers were able to fire live rounds from the weapon system on a 100m Range conducted on the MNC firing range. With the limited training and handling there are some very good natural shots within the team



### **Successes:**

All the teams picked up the all the packages quickly and easily. The training brought MEP and the Pardamat rangers closer together and will enable us to deploy alongside effectively and safely.

### **Challenges:**

The training was far too short to cover what we wanted to cover. This meant that we had to rush though a number of the packages. Many of the rangers stated they wanted more assets to work with in the field.

### **Recommendations:**

Existing Patrol outposts should be looked at and possible a review of the current deployments and intelligence gained from these outposts. Rangers should be rotated more often and be more mobile. The rangers need more equipment to make them more mobile. Specifically backpacks, cold weather gear, a dedicated vehicle.

Leadership and development plan for rangers: Rangers need better leadership in the field and ongoing in house training and encouragement to furnish patrols, conduct investigations generally operate effectively on a daily basis. All rangers need feedback from leadership, fed active intel, given adaptive tasks, and shown a keen interest on a regular basis.

With no fixed location these teams would patrol a larger area and have more impact on communities and gathering of ground truth / knowledge whilst mobile.

The Current Information database held should be enhanced and managed in correlation with all key stakeholders (Mara conservancy/Naibosho/Mara North etc) Existing Intel is being held by a number of staff across the conservancies. This should happen through WILD.

All existing intelligence already filed and ongoing intelligence from framework patrols is to be processed into an analytical database. This would allow detailed analysis from ongoing intelligence investigations, which would then lead to the tasking of patrol commanders to known areas of concern to conduct detention operations against known individuals highlighted from the held data base.

The construction of a Pardamat HQ Operation's room (or integrated into MEP ops room), with the current communications equipment should be enhanced through a digital communications system (MOTOTRBO DP 3400) this will allow **live** 24/7 tracking and monitoring of deployed patrols with all patrol routes, patrol location and voice data being stored for future reference.

Nominated commanders need commanders training. Selected training packages also to be offered to increase IT skills.

(Please see attached Training evaluation forms and attendance sheet attached)

### **Planned activities:**

Host Drone Training for KWS with PREPARED  
Host WILD launch at MEP HQ